



Southern Illinois University School of Medicine
and
Memorial Medical Center
Springfield, Illinois

The Pathology Atlas is a searchable database of full-color pathology images and associated medical information. It is designed to run on both Macintosh and Windows systems. Version 1.0 contains more than 600 images.

System Requirements

Macintosh:

System 7.0 or higher (7.5 recommended)
68030 or higher processor with 6 MB RAM available for the application
Double-speed CD-ROM (quad-speed recommended)
Monitor: 640 x 480 16-bit "Thousands" color. (24-bit "Millions" color recommended.)

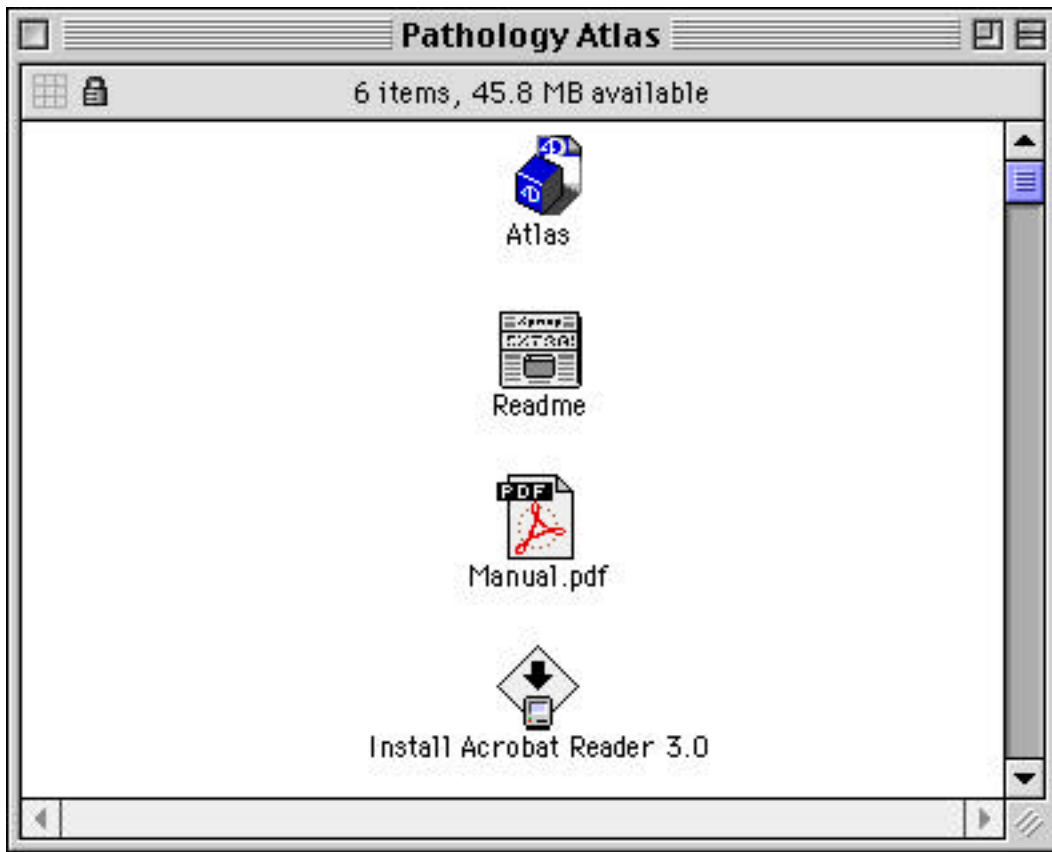
Windows:

Windows 3.1 or higher, Windows NT or Windows 95
486 sx or higher with 6 MB RAM available for the application
Double-speed CD-ROM (quad-speed recommended)
Monitor: SVGA 640 x 480 16-bit "High Color." (24-bit "True Color" recommended)
Microsoft Win32s required for Windows 3.1x

Installation and Program Launch

There is no separate ‘setup’ or ‘install’ procedure required before running the program on either the Macintosh or Windows platform. The program may be run directly from the CD-ROM. However, for faster performance, you may copy the contents of the CD-ROM to your local hard drive and run the program from there.

Macintosh Launch Instructions



Double-click the “Atlas” icon. The program will launch. Proceed to “Pathology Atlas Program Instructions” section of this manual for information on how to use the program.

Windows Run Instructions

To run the database for the first time, double-click the “My Computer” icon on the Windows desktop. The following window will open.

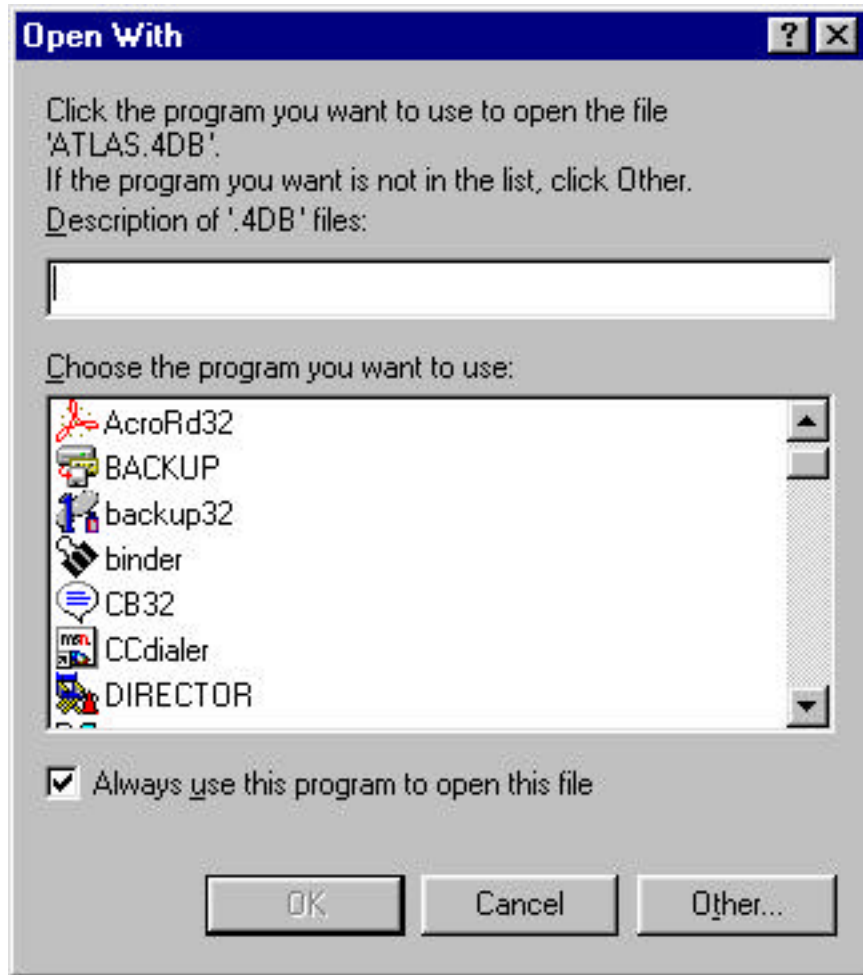


Double-click your CD-ROM drive icon. It will be labeled “Atlas[E:].” (Your drive letter may be different than “E”)

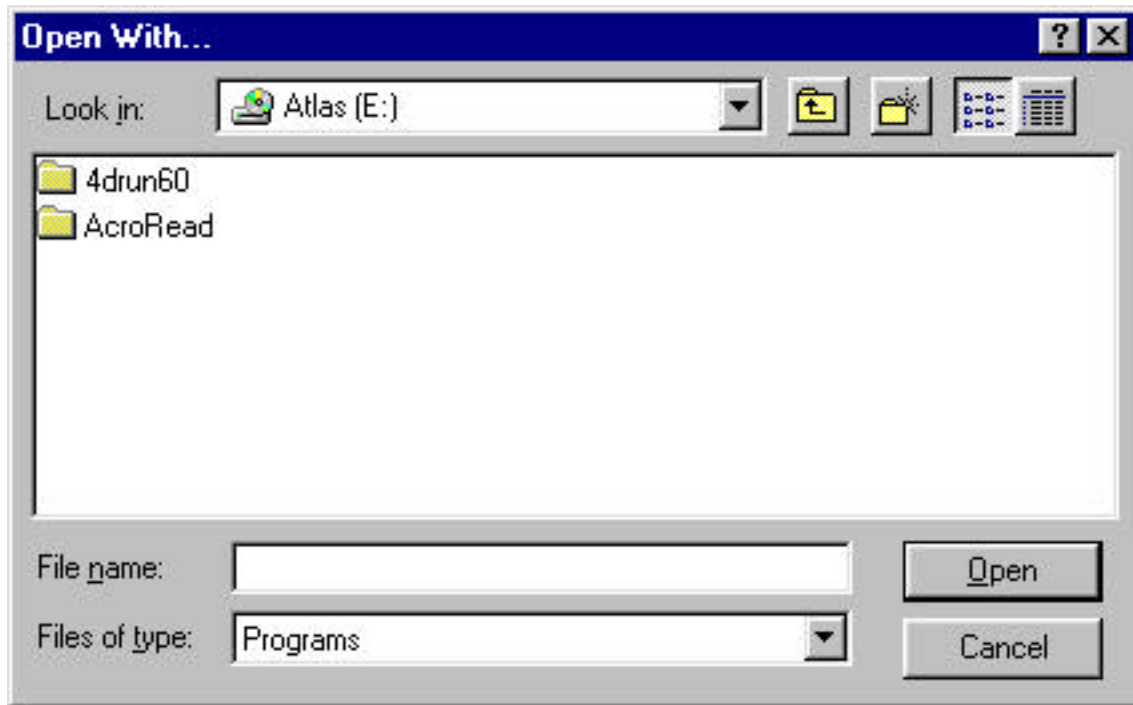


Note: If you are running Windows 3.1x, you must install Microsoft Win32s before you can use the ATLAS database. Windows 95 or Windows NT can run the program without any additional software. The Win32s software installer is available from Microsoft Corporation at www.microsoft.com.

To run the Pathology Atlas program, double-click the "Atlas.4db" icon.



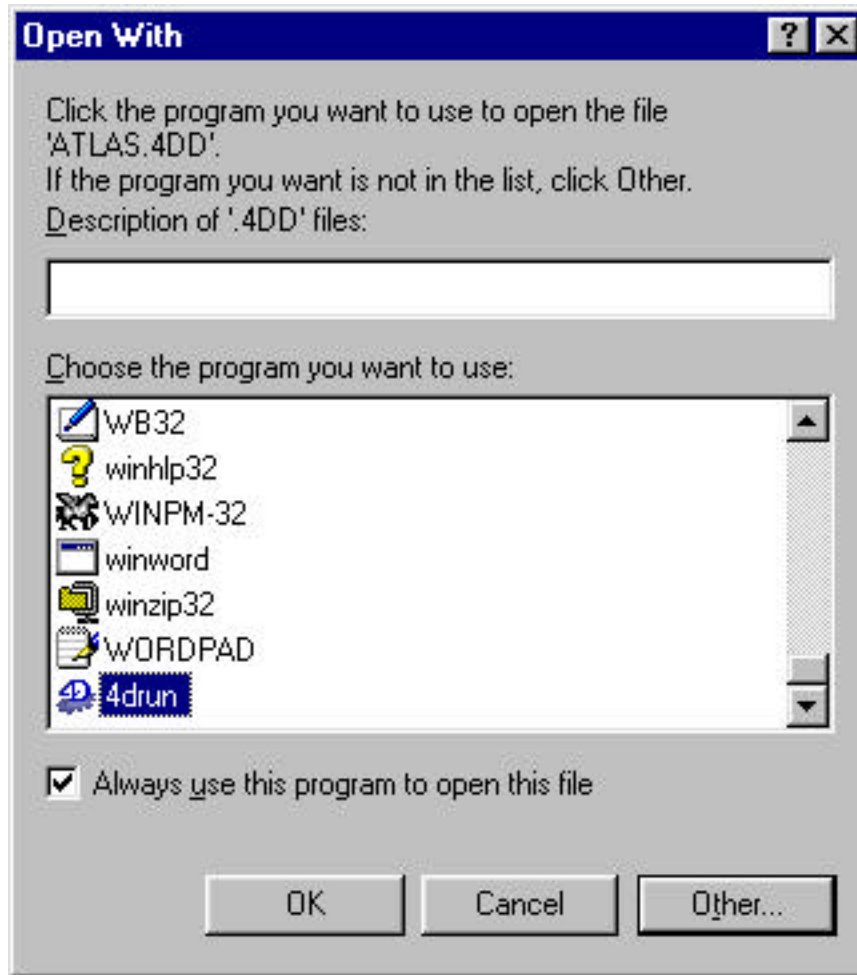
This dialog box requests that you locate the 4D Runtime application to run the database. Click “Other...” to locate the application.



Select the “4drun60” folder and click “Open” in the above window.



Select the “4drun.exe” icon and click “Open.”



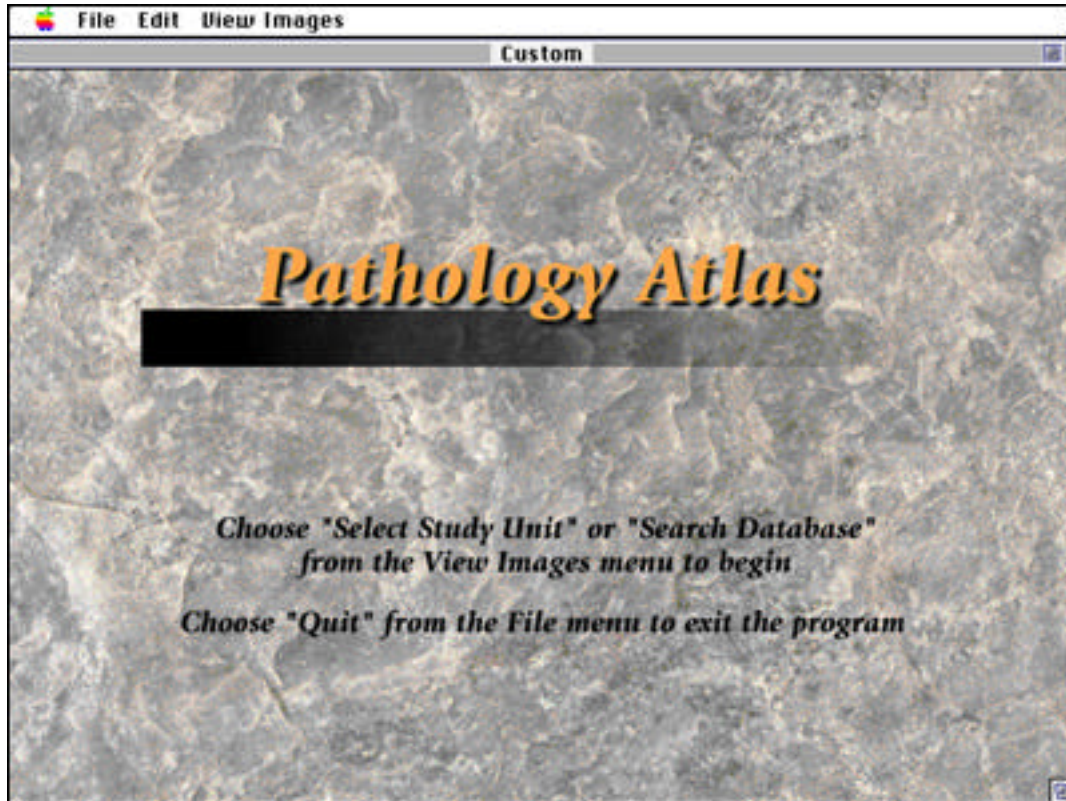
Check the box “Always use this program to open this file.” Select “4Drun” and click “Open.” The database will then run.



Note: During subsequent program launches, the program will run automatically when you double-click "Atlas.4db" in the CD-ROM window.

Pathology Atlas Program Instructions

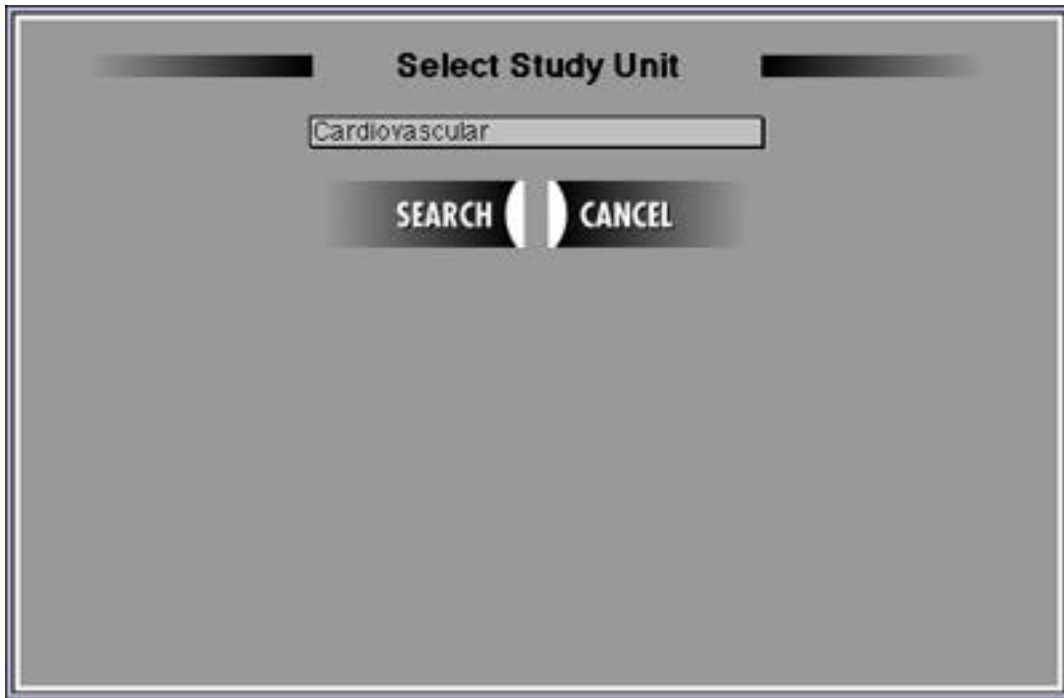
Main Screen



This screen is displayed when the program is launched. You will return to this screen whenever you have finished viewing a selection of images. Quit the program by selecting Quit from the File menu.

To begin a search, choose Select Study Unit or Search Image Database from the View Images menu. One of the two following screens will appear: The Select Study Unit or the Search screen.

Select Study Unit Screen



Use the pull-down menu to select the study unit. (Windows users: Click and HOLD DOWN the mouse button as you drag through the selections in the menu.)

In this example, all images in the Cardiovascular study unit will be selected.

Press SEARCH after you have chosen the study unit. Press CANCEL to return to the main screen without performing the search.

Search Screen

The screenshot shows a search interface titled "SEARCH". It features several input fields and options:

- Study Unit:** A pull-down menu.
- Organ/Fluid/Tissue:** A pull-down menu with "Heart" selected.
- Photo Type:** A pull-down menu with "Gross" selected.
- Photo Caption:** A text input field.
- Diagnosis:** A text input field.
- History:** A text input field.
- Case Number:** A text input field.

Instructions for the pull-down menus: "Use these pull-down menus to select a Study Unit, an Organ, or a Photo Type to search for".

Instructions for the text input fields: "Enter a word or phrase in these boxes to search the database text".

Logical search options:

- AND** *Images matching ALL search terms simultaneously will be displayed*
- OR** *Images matching ONE OR MORE search terms will be displayed*

At the bottom, there are two buttons: **SEARCH** and **CANCEL**.

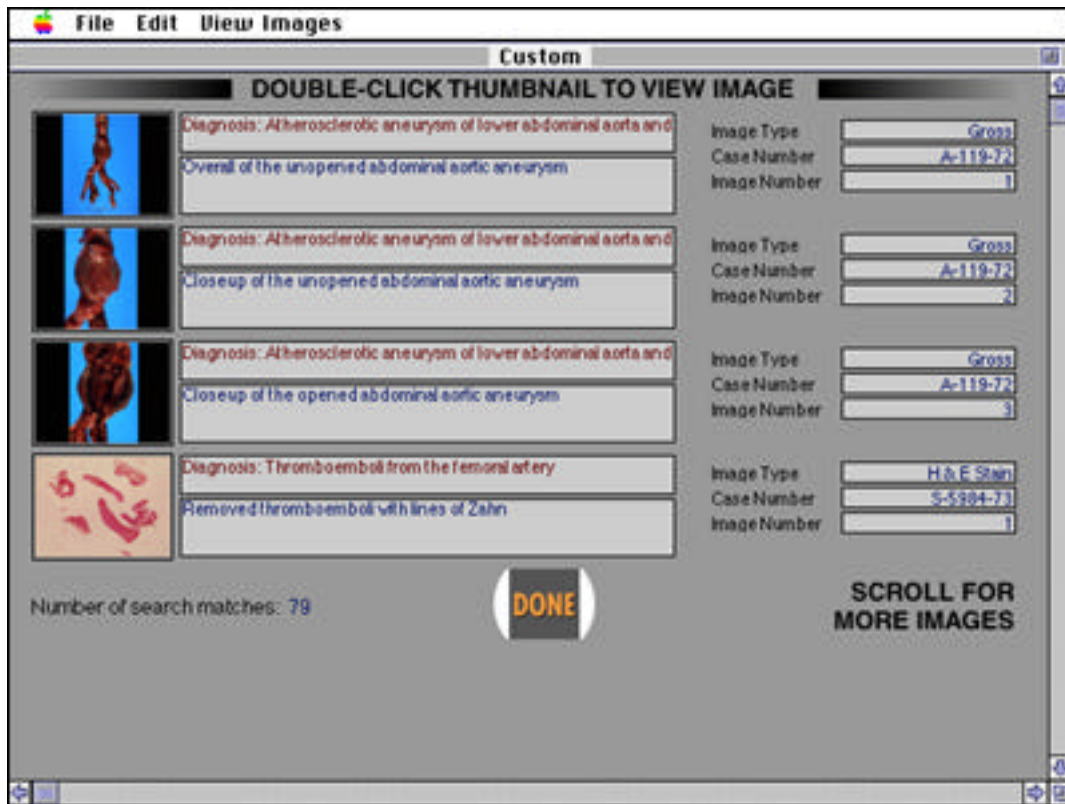
Enter search criteria into the boxes. Some choices are made with pull-down menus (Windows users: Click and HOLD DOWN the mouse button as you drag through the selections in the menu.); others allow free text entry. Any combination of search criteria may be entered.

You can select a logical AND or a logical OR search with the radio buttons. (AND searches select only items which exactly match all search criteria entered. An AND search is more selective than an OR search, which selects items matching any criteria entered.)

In this example, an AND search, Gross views of the Heart will be selected.

Press SEARCH after you have entered the search criteria. Press CANCEL to return to the main screen without performing the search.

Thumbnails Screen

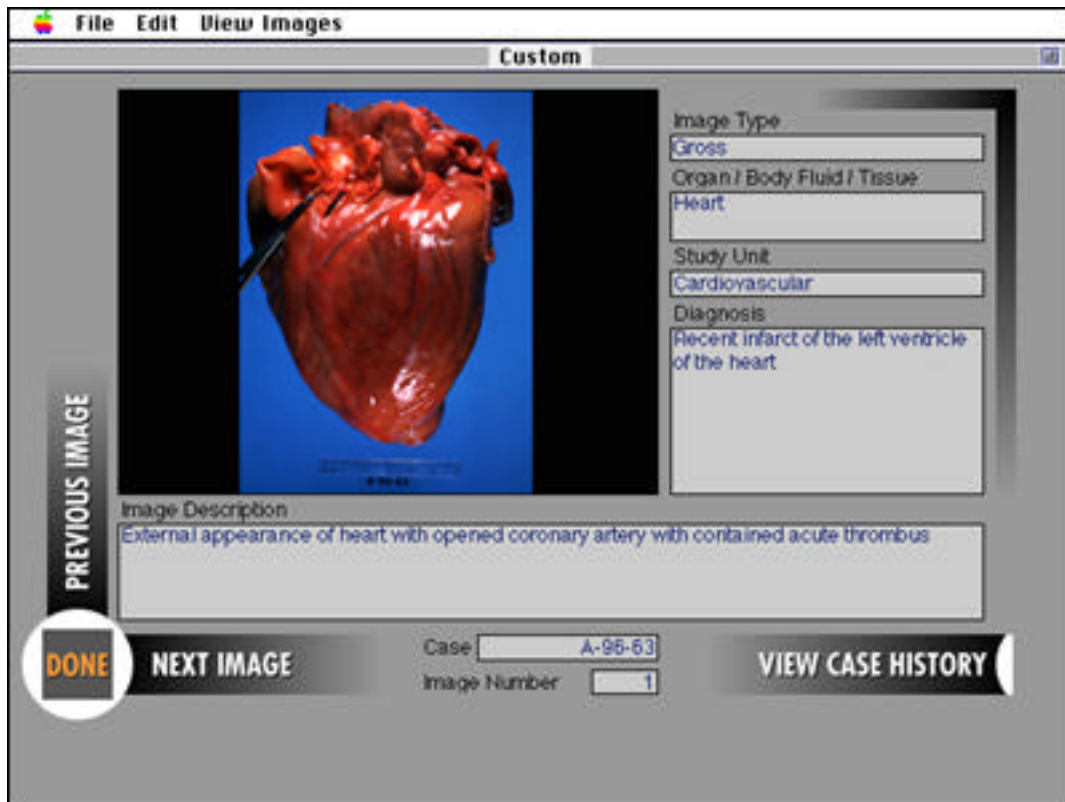


The images found during the search are displayed as thumbnails. A summary of the text-based information associated with each item is displayed to the right of the image. If there are more items selected than can fit on this screen, you can use the scroll bar to the right to view the additional items. The number of search matches is shown at the bottom left.

To view an image in more detail, double-click the thumbnail. A screen with a full-sized image and medical information will be displayed.

To exit this screen, press DONE. You will be returned to the main screen, and will be able to perform another search or exit the program from there.

Full-Image Display Screen

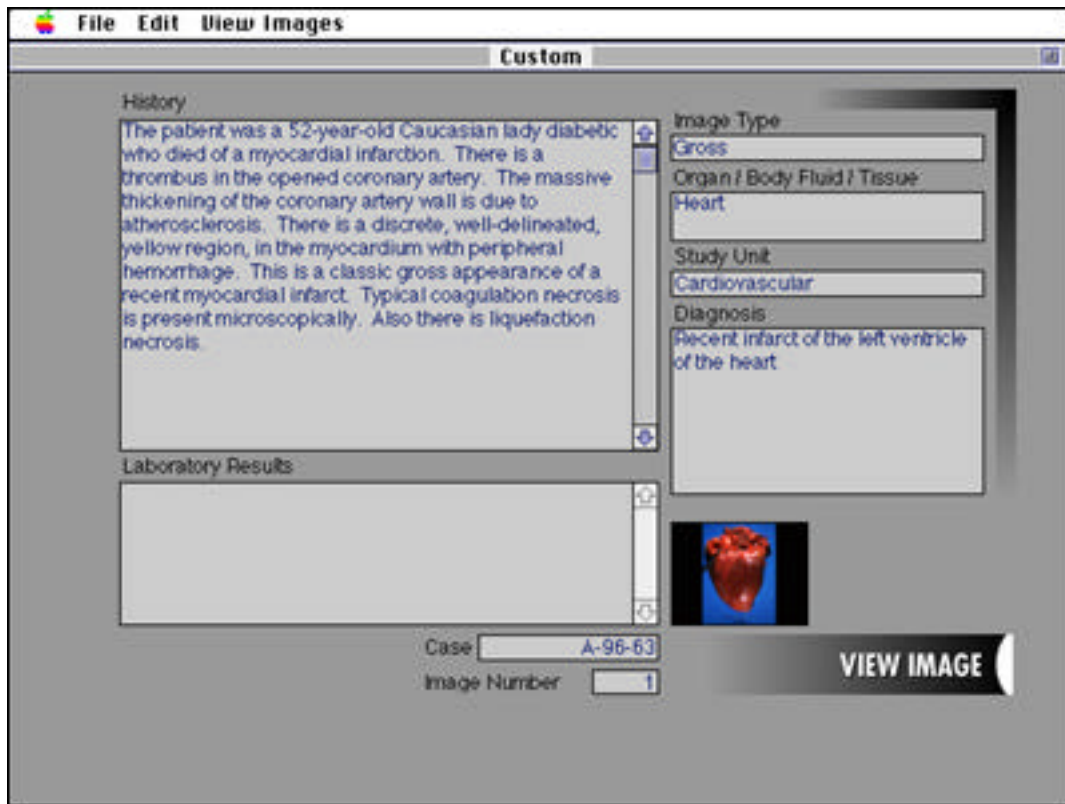


After double-clicking a thumbnail image, this screen will be displayed. It contains detailed information about the image. You can read information contained in the patient's case history by pressing the VIEW CASE HISTORY button.

You can view information on the other images in the thumbnail list by pressing the NEXT IMAGE or PREVIOUS IMAGE buttons.

Press DONE to return to the thumbnail screen.

Case History Screen



Scrollable text boxes appear containing the case history and laboratory results. A thumbnail of the current image is shown.

Press VIEW IMAGE to go back to the Full Image Display Screen.

To quit the program, you must always return to the main screen and choose Quit from the File menu there.

Credits and Copyright

Contributors

John G. Dietrich, M.D. *Jordan L. Mann, M.D.*
Gregory D. Akers, M.D. *Mona W. Ghobrial, M.D.*
Joan E. Barenfanger, M.D. *Nat J. Mody, M.D.*
Michael J. Beckmann, D.O. *John E. Murphy, M.D.*
Barrett W. Dick, M.D. *Edward J. Poje, M.D.*
Cynthia C. Flessner, M.D. *Brian W. Webb, M.D.*

Debbie Stoll, LRPD Secretary

Memorial Medical Center Photography Department

Gary Carter, Chief Photographer
Mike Wooldridge, Photographer
Marsha Godtfredsen, Photographer
Stevie Spencer, Assistant
Cheryl Fireline, Assistant

Southern Illinois University School of Medicine

Thomas Penrose, Database Programming
Lynette Ellis, Graphic Design

This atlas is dedicated to the memory of
Grant C. Johnson, M.D.

He served the medical profession as a pathologist and teacher from 1955 to 1992. During the span of his long and productive career he had the foresight to accumulate an extensive library of medical and forensic cases to support his passion for teaching. It is from this resource that we bring you many of the cases reproduced here.

All photographs, medical information, screen graphics, and computer code contained in this program are copyright © 1998, Memorial Medical Center and Southern Illinois University School of Medicine, Springfield, Illinois. For information, contact John G. Dietrich, M.D., Chairman, Department of Pathology, SIU School of Medicine, PO Box 19230, Springfield, Illinois, (217) 788-4505.

Application Software

4D Runtime 6.0.1 for Macintosh and 4Drun.exe for Windows are designated by the ACI US, Inc., as redistributable according to the 4th Dimension license agreement and can be freely distributed according to the terms and agreements of that license. 4D Runtime is a 32-bit application, and will run on 32-bit operating systems such as Windows NT and Windows 95. To run 4D Runtime on a 16-bit operating system such as Windows 3.1.x, Microsoft's Win32s software is required. Win32s is available free from Microsoft, and can be downloaded from various online services and from Microsoft's World Wide Web site at:
<http://www.microsoft.com>.